



M1 AIR BORE GAUGES

M1 Air, pneumatic bore gauge, is particularly suitable to test components within very tight tolerances (from IT2 to IT7), and roughness $\leq 0,8$ mm Ra.

The measurement principle is based on the variation of pressure, that is proportional to the distance between the bore gauge nozzles and the part under test.

The measurement is obtained by means of the so called "balanced pneumatic bridge" system, with differential pressure transducers and electronic amplification of the signal.

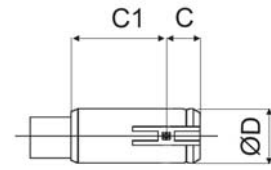
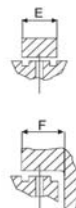
The signal is converted from analogue to digital through electronic converters.

M1 Air bore gauges are entirely manufactured by:

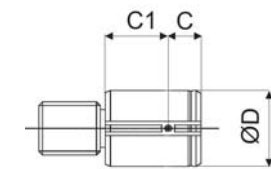
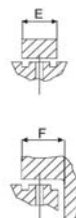


TPS - PNEUMATIC PLUG GAUGES

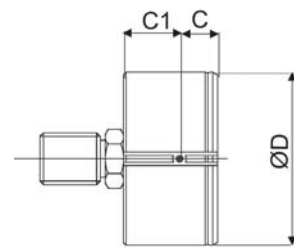
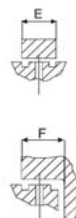
		Through bore			Blind bore				
\varnothing D	range	C	C1	E	Type	C	C1	F	Type
3 - 4,15	0,03	6,5	31,5	1,8	T	6,5	31,5	1,8	B
4,15 - 6,3	0,05	9,5	28,5	2,5		9,5	28,5	2,5	
6,3 - 10	0,1	13	25	3		13	25	3	



		Through bore			Blind bore				
\varnothing D	range	C	C1	E	Type	C	C1	F	Type
10 - 20	0,1	13	25	3	T	4	34	5,5	B
20 - 30	0,1	13	25	3		4	34	5,5	
30 - 42	0,1	13	25	3		4	34	5,5	
42 - 55	0,1	13	25	3		4	34	5,5	



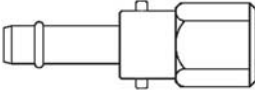
		Through bore			Blind bore				
\varnothing D	range	C	C1	E	Type	C	C1	F	Type
55 - 70	0,1	13	25	3	T	4	34	5,5	B
70 - 85	0,1	13	25	3		4	34	5,5	
85 - 100	0,1	13	25	3		4	34	5,5	

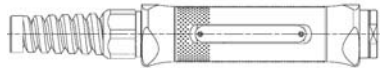
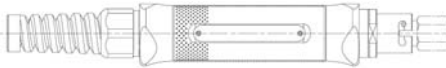
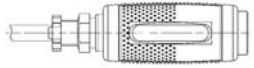


TPS - TECHNICAL SPECIFICATIONS

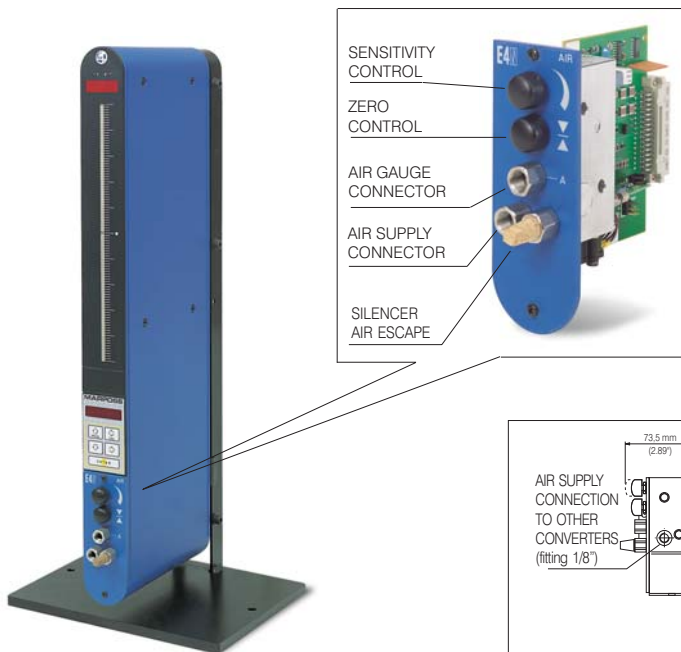
RETOOLING RANGE	3 - 4,15	4,15 - 6,3	6,3 - 100
MEASURING RANGE	max. 0,03 mm	max. 0,05 mm	max. 0,1 mm
REPEATABILITY	≤ 0,5 μm		
AIR SUPPLY	Dry air carefully filtered and purified (filtering degree < 5 μm)		
PIPE FOR AIR SUPPLY	Internal Ø 4 mm - length 2 meters		
AVERAGE CONSUMPTION	< 1000 l/h		

ACCESSORIES

EXTENSIONS			QUICK CONNECTION
Ø D	L	code	
20	50	PLPM-50	
20	100	PLPM-100	
20	200	PLPM-200	

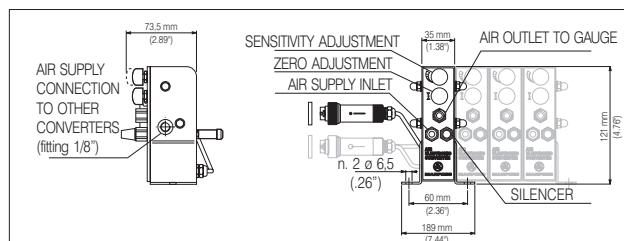
HANDLES		
 <p>STANDARD</p>	 <p>WITH QUICK CONNECTION</p>	 <p>MINI</p>

E4N AIR - EXTERNAL AIR / ELECTRONIC CONVERTERS FOR E4N (TYPE: SENSOR'S PRESSURE)



E4N microprocessor column can display static or dynamic measurements, it features pneumatic-electronic converter with 1 input.

External A/E converter. The M1 Air bore gauge can be connected to the electronic column E4N by means of an external A/E converter.



For a full list of address locations, please consult the Marposs official website

D6M1A100G0 - Edition 09/2007 - Specifications are subject to modifications
© Copyright 2007 MARPOSS S.p.A. (Italy) - All rights reserved.

MARPOSS, ® and Marposs product names/signs mentioned or shown herein are registered trademarks or trademarks of Marposs in the United States and other countries. The rights, if any, of third parties on trademarks or registered trademarks mentioned in the present publication are acknowledged to the respective owners.

Marposs has an integrated system to manage the Company quality, the environment and safety, attested by ISO 9001, ISO 14001 and OHSAS 18001 certifications. Marposs has further been qualified EAQF 94 and has obtained the Q1-Award.